

|  |   |                                     |   |
|--|---|-------------------------------------|---|
|  | <b>Procedure Title:</b><br><b>CompactFlash Memory Card Replacement for the Torqo 1590</b> | <b>Procedure #</b>                  | <b>Rev#: B</b>                          |
|  | <b>Author: G. Szakacs</b>   | <b>Release Date:</b><br>22-APR-2015 | <b>Effectivity Date:</b><br>22-APR-2015 |

## CF Memory Card Replacement for the Torqo 1590

### 1 PURPOSE:

Describe the steps to replace the CompactFlash Memory Card in the Torqo 1590 touchpanel (IVC-NP880S).

Examples of CF cards commonly used in Torqo 1590 and Torqo 1600 models:

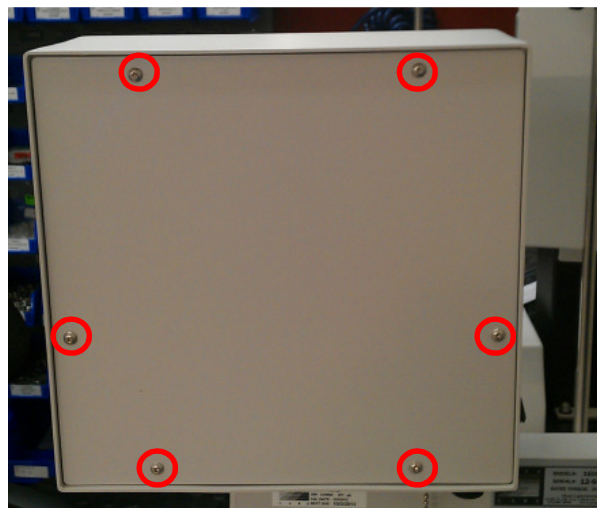


### 2 SCOPE:

CF Memory Cards are used for storing the Torqo software, test data and test profile files. Over time, the CF card may become corrupt. This procedure describe the process of replacing the CF card.

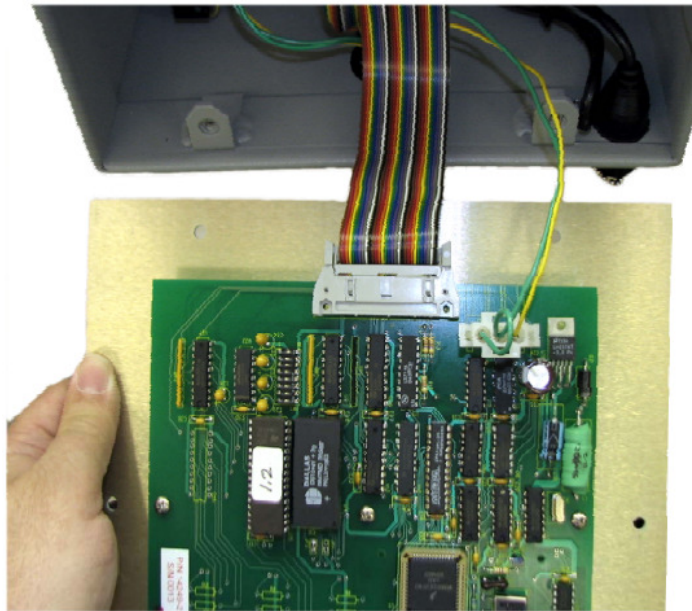
### 3 PROCEDURE:

1. Verify the Torqo 1590 is disconnected from the power source.
2. Remove the Touch Screen rear panel. Use a 3/32" hex wrench to remove the 6 button head screws attaching the panel to the rear of the Touch Screen enclosure.



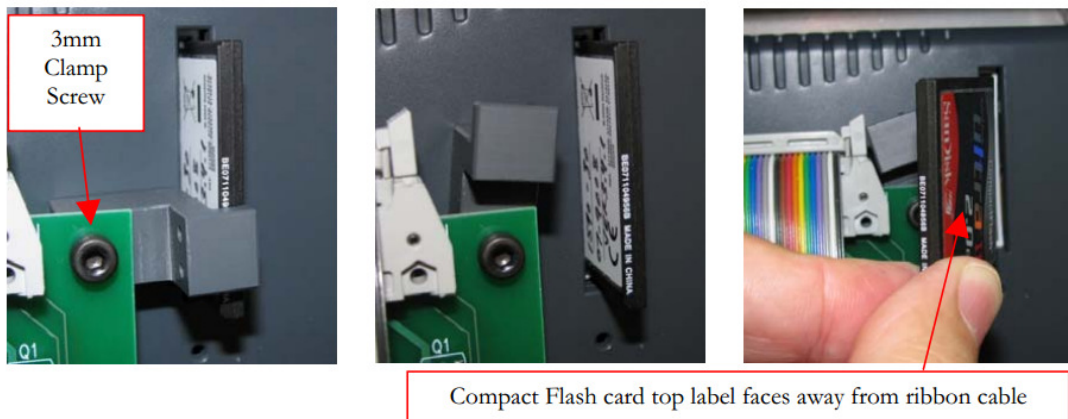
3. Disconnect the cables from the circuit board that is mounted on the panel:
  - a. Remove the ribbon cable by pressing on the two ejector tabs located on each side of the connector.
  - b. Remove the white power connector by squeezing the tabs on both sides of the connector and pulling it off the board.
  - c. Set the panel aside.

|   |                                     |   |
|---|-------------------------------------|---|
| <b>Procedure Title:</b><br><b>CompactFlash Memory Card Replacement for the Torqo 1590</b> | <b>Procedure #</b>                  | <b>Rev#: B</b>                          |
| <b>Author: G. Szakacs</b>   | <b>Release Date:</b><br>22-APR-2015 | <b>Effectivity Date:</b><br>22-APR-2015 |



4. Loosen the 3mm hex head screw securing the Compact Flash Card clamp..
5. Swing the clamp away from the card.
6. Pull out the card.

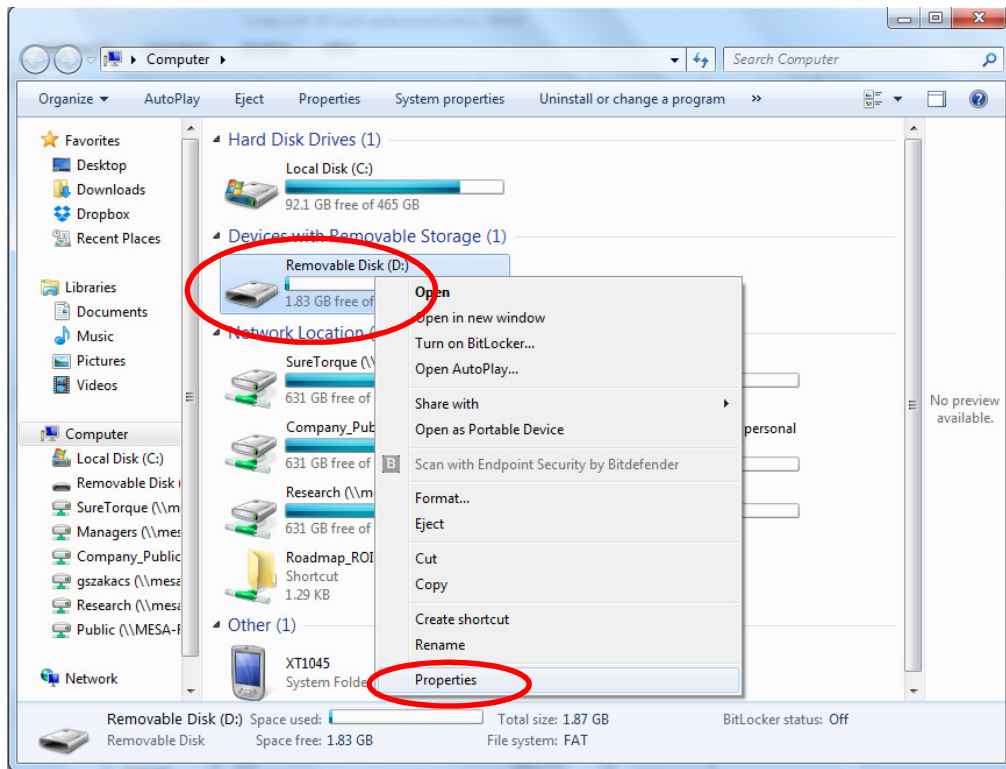
**Caution: Please note the orientation of the Compact Flash card. Improper installation can damage the card and touch panel.**



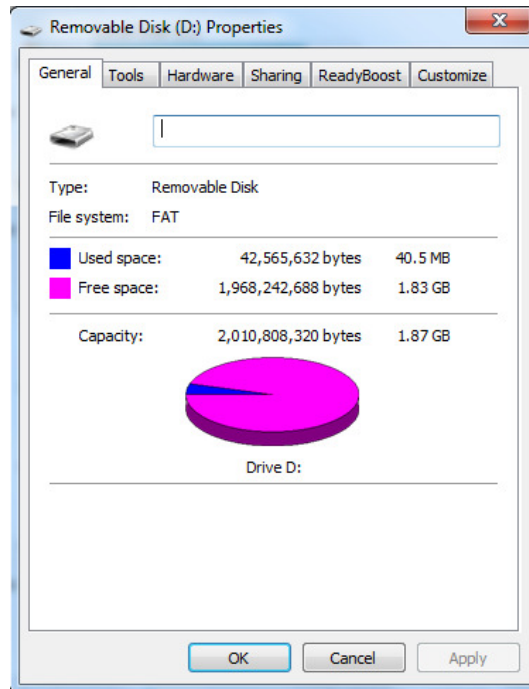
7. Carefully insert the replacement card.
8. Reposition the clamp and tighten the clamp screw.
9. If you received a new EPROM as part of the upgrade then refer to the “EPROM Replacement Instructions”.
10. Reconnect the cables to the Main Board and reattach the rear panel. The Compact Flash card replacement procedure is complete.

For backing-up/restoring the data and profile memory, follow the procedure below:

11. Insert the CF card in a USB multi-card reader
12. Insert the USB reader in your computer’s USB port.
13. Wait a few seconds until the new drive is recognized.
14. Under “My Computer”, “right click” on the new drive then select “Properties”.




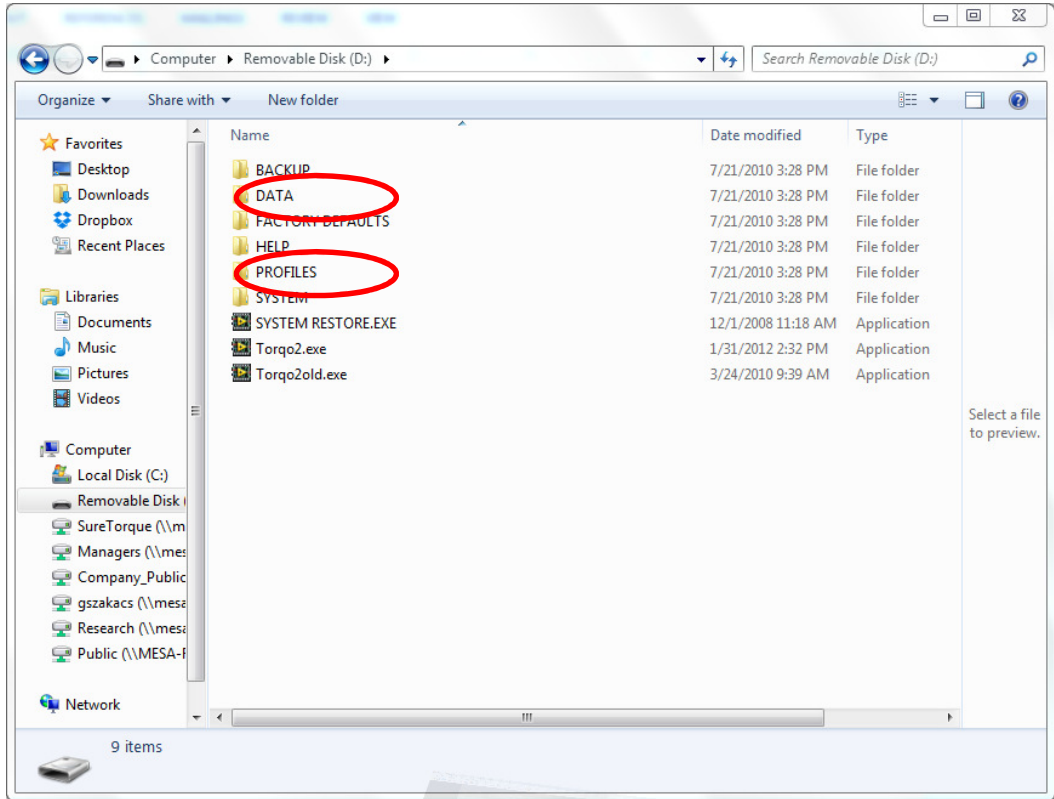
15. Verify that at least 20% of the drive is free space.



16. Hit Cancel, then open the new drive.

17. Navigate to the Data and Profile subfolders and backup/restore the content of the folders as necessary.


|  |   |                                     |   |
|--|---|-------------------------------------|---|
|  | <b>Procedure Title:</b><br><b>CompactFlash Memory Card Replacement for the Torqo 1590</b> | <b>Procedure #</b>                  | <b>Rev#: B</b>                          |
|  | <b>Author: G. Szakacs</b>   | <b>Release Date:</b><br>22-APR-2015 | <b>Effectivity Date:</b><br>22-APR-2015 |



18. For additional support, contact the Torque Customer Service of Mesa Laboratories, Inc.



12100 W. 6<sup>th</sup> Ave  
 Lakewood, CO 80228  
 Tel: 303.987.8000  
 Email: torque@mesalabs.com  
 Web: torque.mesalabs.com

|  |   |                                     |   |
|--|---|-------------------------------------|---|
|  | <b>Procedure Title:</b><br><b>CompactFlash Memory Card Replacement for the Torqo 1590</b> | <b>Procedure #</b>                  | <b>Rev#: B</b>                          |
|  | <b>Author: G. Szakacs</b>   | <b>Release Date:</b><br>22-APR-2015 | <b>Effectivity Date:</b><br>22-APR-2015 |

## REVISION HISTORY

| Revision | Change Summary  | CO | Date Released |
|----------|-----------------|----|---------------|
| B        | Initial Release |    | 22-APR-2016   |