

Recommended Power Off Procedure for Torqo II+ Model 1600 Touch Panel PC

The current Torqo II+ Model 1600 uses a touch panel PC running Microsoft Windows XP Embedded operating system from an internal Compact Flash card. It is possible for some files on the Compact Flash to have problems by repeatedly turning off the touchpanel PC while the Torqo program is running or while Windows itself is running. Normally this will not be an issue, but over time it might cause problems with some files on the Compact Flash disk.

In order to remove this chance we recommend that the Windows touchpanel PC be shut down before turning off the power switch, using the following procedure. Alternately the Torqo unit can be left running.

A procedure to check and repair the files on the Compact Flash card is also given here.

I. Power Off Procedure

First, exit the Torqo application by going to the Main Menu and selecting Exit to Windows. Please note the keyswitch must be in Program position for the Exit to Windows button to be visible. Press OK to exit the Torqo application.

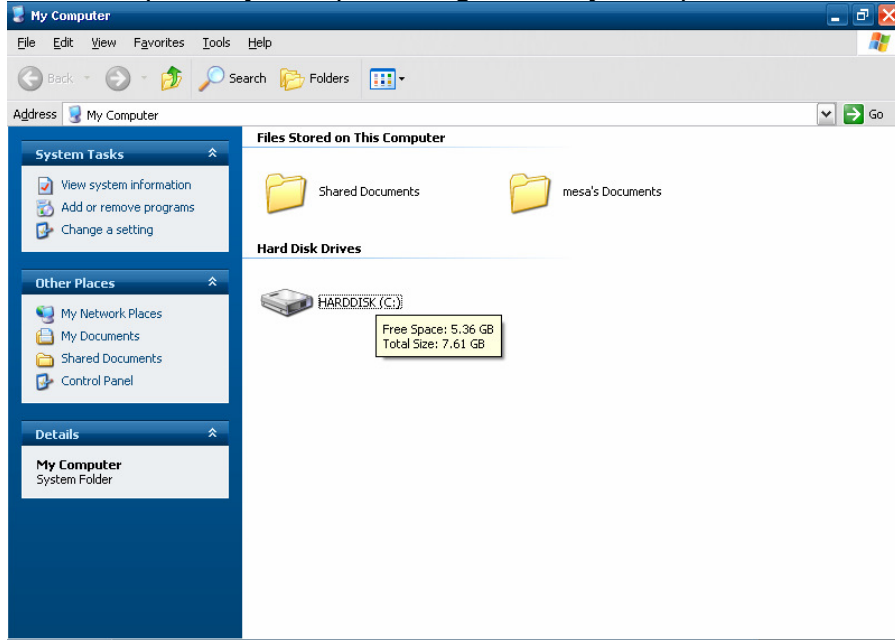
Next, press the Start button in the lower left of the Torqo touchpanel screen. You will see the following dialog. Select the Turn Off Computer button at the bottom. Then select the Turn Off Computer option and press OK. When the computer screen goes blank and the green power LED is OFF then it is OK to turn the power switch OFF.



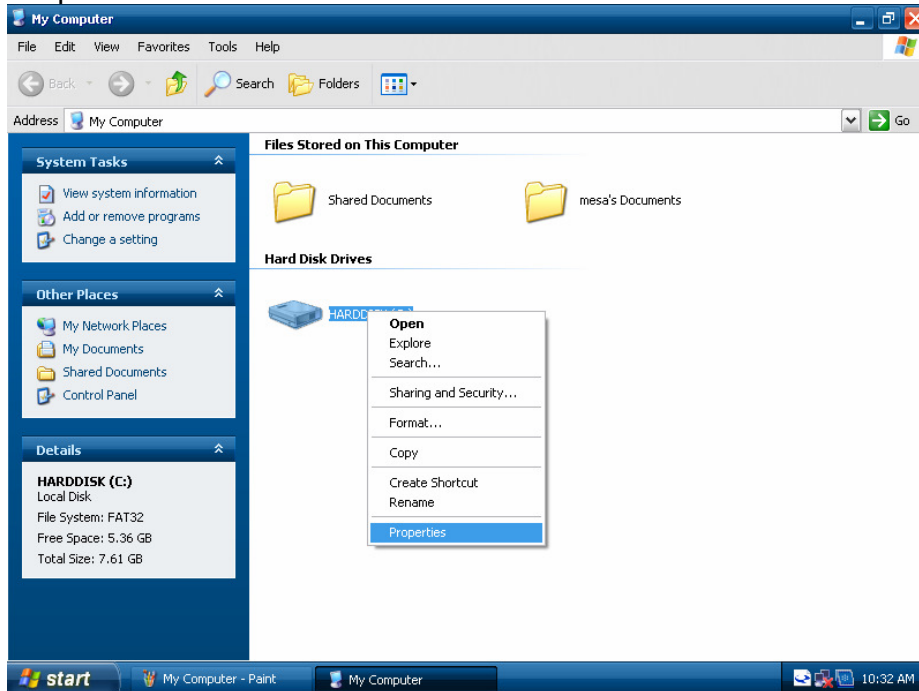
II.

Running Check Disk on the Compact Flash card.
Performing this check disk process once per month should be done if the touchpanel is routinely shut off without closing down the Windows operating system as shown above.

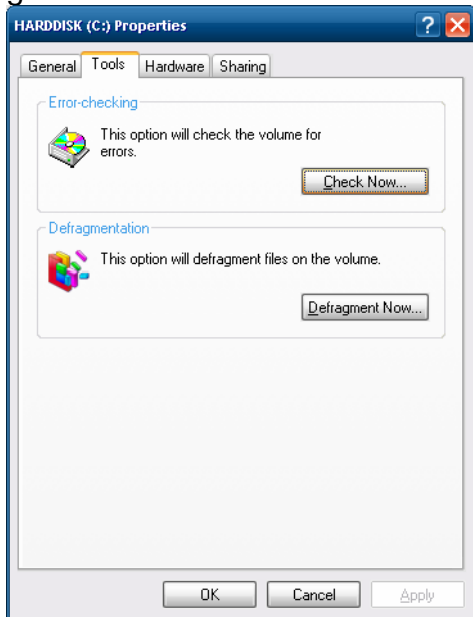
Exit the Torqo application to Windows as described above.
Press the Start button in the lower left corner of the desktop.
Double tap on My Computer to get the My Computer screen shown below.



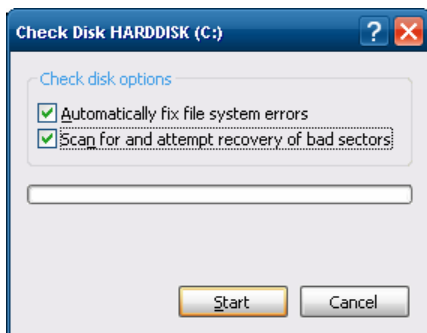
Press and hold the HARDDISK (C:) icon (or right click with a mouse) and select the Properties as shown below.



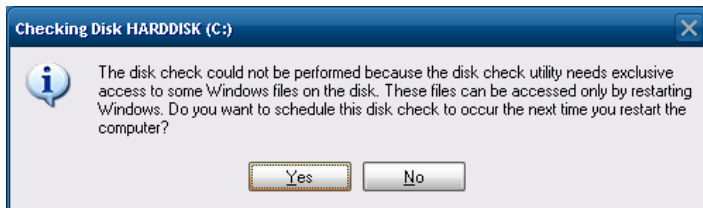
The Harddisk Properties dialog will appear, click on the Tools tab along the top to get the screen below.



Click the Check Now button to get the screen shown below. Check both Checkboxes as shown then click the Start button.



Since the Compact Flash card is being used the check disk will occur on restart, and the following message will appear. Click Yes.



Shutdown the computer as described on Page 1 then restart it by turning the power back on. The check disk process may take 15 minutes or so to complete after the touchpanel restarts.

If you have any questions or comments about this procedure please contact torgo@mesalabs.com for further assistance.