

Updating Torqo settings for Outputting Test Result Data

1. Press the Test Profile button in the lower right of the Graph screen shown in Figure 1.
2. Press the Main Menu button at the bottom of the Select Test screen shown in Figure 2.

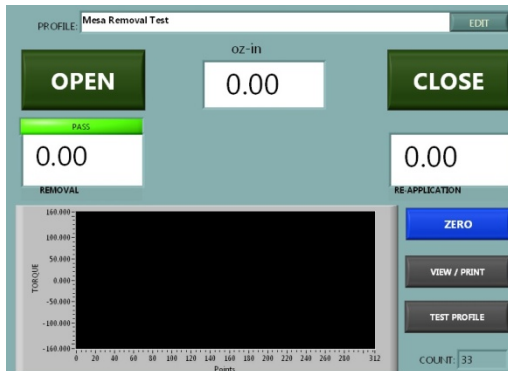


Figure 1

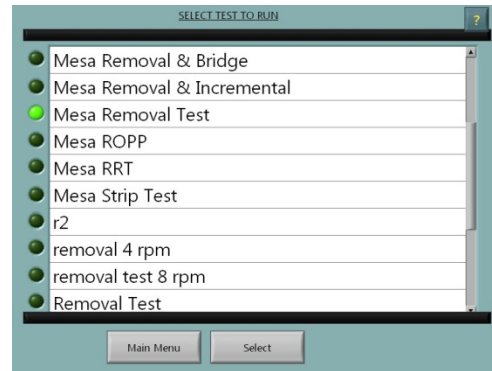


Figure 2

3. From the Main Menu, shown in Figure 3, press the System Options button to get to the System Options Page 1 screen shown in Figure 4.

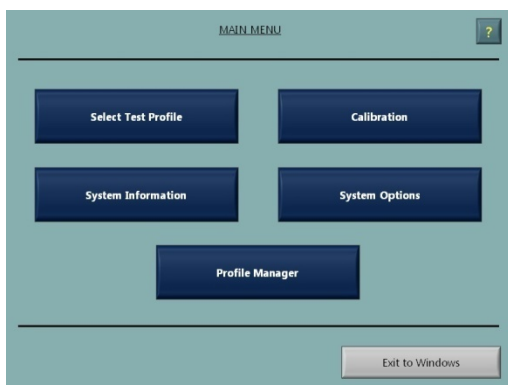


Figure 3

4. Press the Auto Transmit to PC button and the screen shown in Figure 5 will appear.

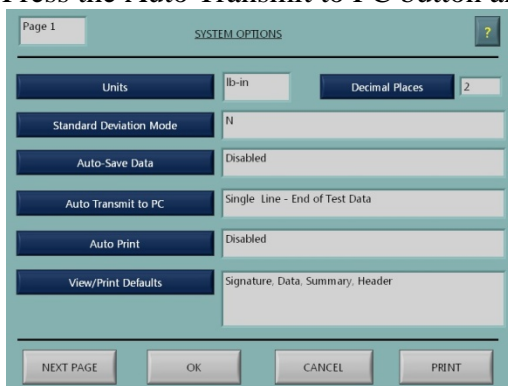


Figure 4

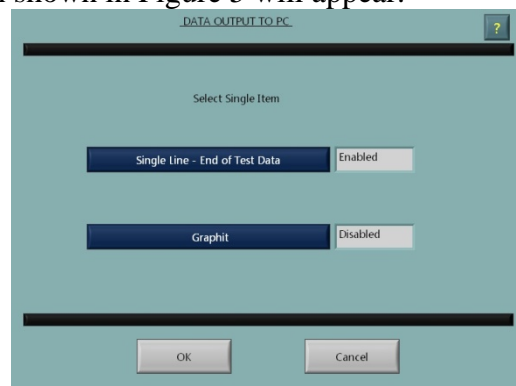


Figure 5

5. Make sure Single Line – End of Test Data is Enabled as shown in Figure 5 . This will also switch Graphit to Disabled.
6. Click OK on two screens to return to the Main Menu. The new settings will be retained.
7. Then press Select Test Profile, select your desired profile, and use the machine normally.
8. Each time a test completes, the data will be sent out the PC OUT port on the rear of the Torqo and it will be available for collection by the data collection system. Please make sure the adapter and cable are connected to the PC OUT port.