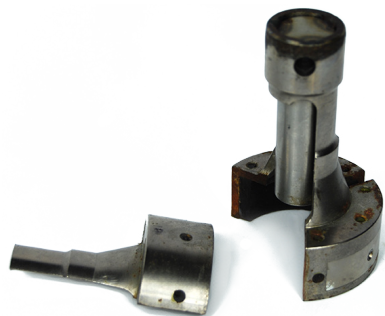


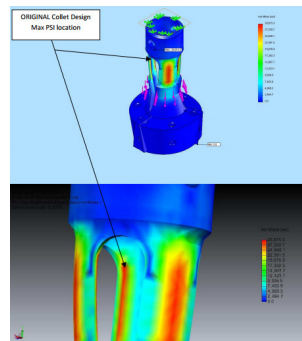
# SureTorque Accessories

## Fatigue Resistant Cap Gripper

A collet is often used in conjunction with a container capping device for gripping a threaded closure in preparation for the rotation of the caps onto the threaded containers. Historically, SureTorque collets were comprised of a plurality of fingers that are contiguously joined to one another, but are comprised of flexible material that is sufficiently thin to flex between an open and a closed position. In the closed position, the fingers grip the cap. The constant flexing of the fingers through numerous operations can result in failure of the fingers at the flex point.

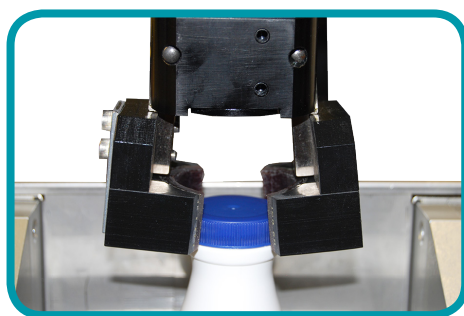


Collet fatigue break

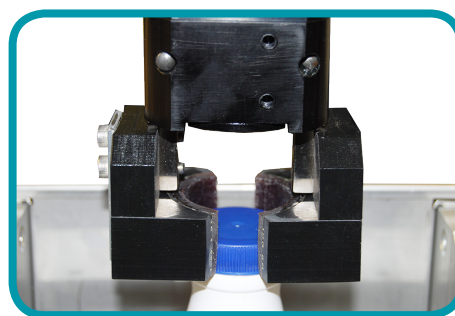


FEA Analysis of standard collet

Design innovation has been taken into account to improve the historical collet design, thus reducing the probability of fatigue failure.



Fatigue resistant gripper  
open position



Fatigue resistant gripper  
closed position

The new, fatigue-resistant gripper is primarily recommended for high duty cycle applications, with automated inline and rotary bottle feeding systems.

Due to the high level of project- and product-specific customizations, the compatibility of the fatigue-resistant gripper must be evaluated on a case-by-case basis.

Please contact a Mesa representative for compatibility and pricing information.